



# Concrete Experts to Deliver Building Excellence

 **DANDEKAR  
BROTHERS**  
(A Dandekar Brothers Group Company)



Concrete Works  
Construction Chemicals  
Private Limited

**Solutions for  
all your  
construction  
needs**





“

**Our Reputation Is  
Built On Your Vision**



## MANAGING DIRECTOR'S MESSAGE



Ever since the inception of CWC, Technology, Service and Innovation had been primary focus areas.

It has always been a distant reality and once one milestone is achieved, there is always another one waiting to be crossed. This needs a highly motivated, experience TEAM to ensure we are there in the relay to reach our goal.

Our business is extremely sensitive business that requires complete long-term credibility and thus to support that, we have strong capital INVESTMENT portfolio to up press the continual business flow and cater to the industry.

As this is our beginning, the start-up will be small scale with all the Product, Process, Technology and service capability to serve the construction industry with products like Concrete Admixture, shotcrete, grouts, repair mortars, bonding agents, adhesives, curing & sealing compounds, joint fillers, sealants, waterproofing, repair and other products like Cement Grinding Aids.

It is my privilege to introduce CWC, a professionally managed organization by a group of experienced professionals from the Construction Chemical field who have served the Industry for more than a Decade and established them in mega & infra projects like Nuclear, Airport, Bridges, Thermals, windmills, Metros, Monorail, Roads, marine projects, irrigation.

I am overwhelmed to say that with the support, trust, belief, understanding from you made me serve you & Industry for such a long time (25-30 Years), I would appreciate similar support, trust, belief, understanding with Team CWC for the best technical understanding to overcome & accept the technical challenge through modern proven chemical solutions for the construction chemical industry.

Overcoming challenge after challenge with the support of my brilliant team, a high amount of technical know-how, expertise and specialized knowledge provides solutions to our direct/in-direct clients, contractors, Architect, Engineers, distributors and owners.

CWC with its in-house support services which includes unique & customised R&D Facility, In-depth analysis ability, educating seminars for applicators, distributors and end user to know our product strengths, Technical excellence and thus pioneer ourselves in the construction chemical industry.

I believe we at CWC are enthusiastically challenging ourselves to be a trustworthy, reliable, economical, Technology oriented lifelong partners to our clients to grow their business values in this everyday challenging Construction Industry. I am confident that the company will continue to scale milestones of excellence for years to come and moreover each one of our TEAM are well known to the market for years and each one of them are having their own signature move in the industry.

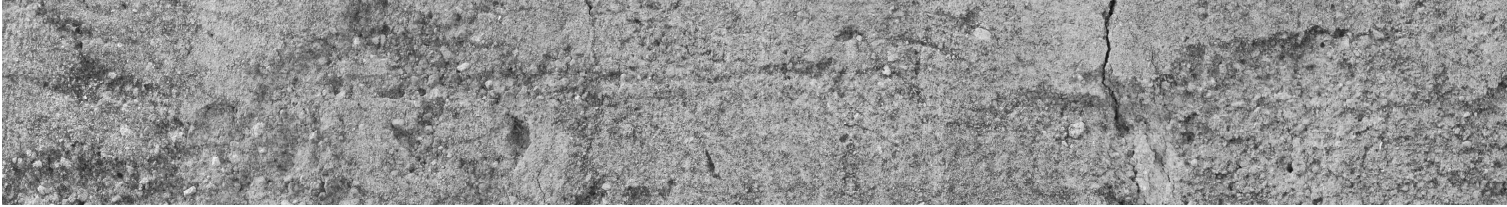
I am happy to introduce ROBO, SMART & CEM brand of products under the banner of CWC.

We expect that same commitment from our employees and business partners. Integrity, honesty, competency, collaboration, creativity and respect — these values have defined CWC since the founding of the Company.

*Amith Kumar Datta*

MANAGING DIRECTOR'S





## CWC TEAM'S MESSAGE



Over the years CWC Chemicals has established itself as a renowned Manufacturer and supplier of Concrete Admixture , Construction Systems / Water proofing Chemicals and Cement Grinding Aid. CWC Chemicals has over the years grown in both size and diversity to become a major supplier of specialised construction products to the building, civil engineering and building maintenance industries. Our Work Culture is based on Ethical Values , Fair Trade practices and commitment to supply Quality materials on time , this lead us to establish our Sales Offices in major Cities in India and grown manifold.

We at CWC Chemicals work round the clock to bring best Chemical formulation across the globe and to provide highly technical products to our esteemed customers.

- 20+ years of experience in specialty chemicals.
- Constant Innovation & Technology offering to customers.
- High Performance product at most economical cost

Ever since the inception of CWC, technology, service, and innovation have been primary focus areas. It has always been a distant reality, and once one milestone is achieved, there is always another one waiting to be crossed. This needs a highly motivated, experienced team to ensure we are there in the relay to reach our goal. CWC Chemicals is a professionally managed organization by a group of experienced professionals from the Construction Chemical field who have served the industry for more than a decade and established them in mega & infra projects like Nuclear, Airport, Bridges, Thermals, windmills, Metros, Monorail, Roads, marine projects, irrigation.

We feel gratified to have approvals and also continuous supplies to several Government and Semi-Government companies :-



# WHO WE ARE

We, "Concrete Works Construction Chemicals Private Limited", reckoned manufacturers of entire Construction Chemicals consisting of Admixtures, Waterproofing Systems, Repair Retrofitting special chemicals with technical expertise, also Grinding Aid Solutions to emphasis and cater the Cement Manufacturing and other Minerals Industry. The products offered by us are in high demand in the market because of their technicality, durability, and waterproofing ability. Further, we also offer a wide range of Consultancy for Pre & Post Construction Services.

The formation of our company was based on the growing needs for construction chemical solutions. It was promoted by a Technical and trade expert, who holds more than 25 years of research experience in the field of construction chemicals across India and abroad. The unmatched response received from the clients led to the incorporation of "CWC ". Soon after the set up of the plant and an excellent In-house R&D system, we started manufacturing world-class chemicals. We stand as the proud manufacturers of different types of products and providers of superior consultancy & pre and post construction solutions to the clients located across the Indian Subcontinent. CWC ensure the Construction industry the best complete construction solution delivered to the site, trials, product application and on-site technical training for staff.

Our primary goal is to present and supply the best quality Construction Chemicals and serve the construction industries in the developing countries with an aim to support and align CWC with the "Make in India "movement

We CWC are pleased to introduce ourselves as a new venture of the Dandekar Brothers LLP and proud to be part of one of the dream projects of the group. With the rapid changing demand for innovative products our R&D and Technical key criteria had helped us to provide upgraded solutions of Quality rich products to our clients.

We always believe that our Business is Customer satisfaction oriented which will be our pillar for the success ahead.

### Commitment from Management

- Customer Focus Oriented
- Honesty, Integrity, Professionalism in our relationship to our Clients, Consultants, Architects, Suppliers
- Quality & Process Excellence
- Engaging Investors, Employees, and the Society.
- Safety and Preservation of Environment



## VISION

To become an emerging Technically Advanced Construction Chemicals Manufacturing Company to deliver high end Quality products and services to cater the current and upcoming requirement of Construction Industry



## MISSION

To build long-term partnerships with our customers, suppliers, and other stakeholders, and to provide exceptional value and support at every stage of the product lifecycle.

# QUALITY

We at CWC are focused to deliver Advance level quality Construction Chemicals with High accuracy products with compliance with the respective standards (Indian or International), State of art Manufacturing facility, Stringent Quality Controls to achieve Customer Satisfaction.

IS : 9163



ASTM C494



ASTM C881



ASTM C582



ASTM C1107



ASTM C1305



ASTM C348



IS : 2645



# PRODUCT CATEGORY AND CWC® PRODUCT SERIES OFFERINGS :

CWC offers world class innovative Chemistry based Admixture solutions to cater the customized demands of our Clients, also the Expertise Technical Team which will be add on advantage to uplift the value, vision of our Organization. At CWCC, we have the mission to create values to our Customer's vision.

## SNF based super Plasticizer Admixture.

### **CWC® RoboPlast 1000 / 1500 series**

- Low to moderate water reduction capability of about 20-25%
- For structural concrete, PQC
- Retention workability about 2-3 hrs Grade of concrete:" M10 to M40 grade

## PCE based Super plasticizing admixture.

### **CWC® RoboTech 5000 / 5500 series**

- Ability to achieve water reduction at competitive dosage with a retention capacity of around 2-3 hrs. Suitable with all OPC and PPC Brand of Cement
- Ability to replace Old Generation with New Generation Super Plasticizer
- Ability to produce similar and consistent quality of concrete with aggregate properties variation.
- Early De-shuttering of Concrete is possible. Grade of concrete:" M10 to M50 grade

## PCE based Super plasticizing admixture for SCC, HPC, High SCM

### **RoboHybrid Plus 7000 / 7500 series**

Suitable for all types of OPC and PPC Cement Brands.

- High Water Reduction and stretchable retention ability of more than 3 hrs.
- Steady slump retaining ability makes it easier to transport the concrete to longer reach.
- Extremely excellent Concrete Surface Finisher.
- High Flowable concrete and produce consistent quality of concrete even with variation in crusher sand quality.
- Free Flow Chemistry enable too easy placement through congested reinforcement.
- Combination of Molecules to produce technology to handle Low Sulfate Sensitivity, also variation in Cement chemistry.
- Self-compacting and self levelling concrete, High Cementitious (Cement Supplementary replacement)

## High range PCE based Super plasticizing admixture-Precast, HES

### **CWC® RoboCast 9000 / 9200 series**

- Extremely high-water reduction capacity
- A solution for pre-stressed and precast concrete
- High to extremely High early strength and stable growth over period
- Extremely excellent Concrete Surface Finisher.
- Suitable for all types of OPC and PPC Cement Brands.
- Compatible with SCM like Fly Ash, Slag, GGBS. High flow as well as SCC with good paste volume.

## PCE based super plasticizing admixture.

### **CWC® RoboTech 3000 / 3500 series**

- Ability to achieve water reduction at competitive dosage with a retention capacity of around 2-3 hrs.
- Suitable with all OPC and PPC Brand of Cement Ability to replace Old Generation with New Generation
- Super Plasticizer
- Ability to produce similar and consistent quality of concrete with aggregate properties variation.
- Early De-shuttering of Concrete is possible. Grade of concrete:" M10 to M50 grade

## High Range PCE based Super plasticizing admixture for M60 & above

### **CWC® RoboHybrid 7000 / 7500 series**

Suitable for all types of OPC and PPC Cement Brands.

- High Water Reduction and stretchable retention ability of more than 3 hrs.
- Steady slump retaining ability makes it easier to transport the concrete to longer reach.
- Extremely excellent Concrete Surface Finisher.
- High Flowable concrete and produce consistent quality of concrete even with variation in crusher sand quality.

## PCE based Super plasticizing admixture High SCM

### **CWC® RoboHybrid ECO series**

Suitable for all types of OPC and PPC Cement Brands.

- Moderate to High Water Reduction and stretchable retention ability of 3 hrs.
- Less sticky Green concrete mix production.
- Extremely excellent Concrete Surface Finisher.
- High Flowable concrete and produce consistent quality of concrete even with variation in crusher sand quality.
- Reduction of Carbon Footprint by less emission of carbon dioxide in environment.
- Less heat of hydration and useful for mass raft concreting.

## PCE based Super plasticizing admixture for Extended Workability Retention

### **CWC® RoboHybrid 100 series**

Suitable for all types of OPC and PPC Cement Brands.

- Moderate to high water Reduction and Extended workability retention more than 4 Hrs.
- Steady slump retaining ability makes it easier to transport the concrete to longer reach like inside sea.
- Excellent Concrete Surface Finisher.
- Less sticky mix production.

# PRODUCT CATEGORY AND CWC® PRODUCT SERIES OFFERINGS :

CWC offers world class innovative Chemistry based Admixture solutions to cater the customized demands of our Clients, also the Expertise Technical Team which will be add on advantage to uplift the value, vision of our Organization. At CWCC, we have the mission to create values to our Customer's vision.

## Slump Retarding Admixture for Concrete

### CWC® SR 1000 / 1500

- To produce wide range of concrete grade with variable retention as per site requirement.
- Commercial RMC utilize this for different client with variable retention period for different grade of concrete.
- To allow producer for working in multi-brand of cement and sand quality.

## Concrete Surface Retarder

### CWC® CSR-B 1000 and CWC® CSR-S 1000

- Useful for big raft concreting to avoid cold joints.
- Old to New concrete bonding by way of exposing aggregate.
- Avoid Cold joints
- Exposed top surface aggregates from 1-6mm

## Underwater Concrete Admixture

### CWC® AquaSol 10

- Anti-washout admixtures for better cohesion and prevent erosion of plastic concrete.

## VMA/Rheology Modifier

### CWC® ViscoMix

- It has the ability to absorb excess water from concrete mix to make it cohesive.
- It helps to bind the concrete together to make it good flowable mix for SCC along with water reducing admixture.
- It is helpful as remedial solution for segregated mix to make it cohesive upto a limit.

## Chloride Free Accelerator

### CWC® NCA 2000 / 2500 Series

- It has the ability to accelerate the cement hydration process .
- It Offers users to complete work in constrain like low-high tide time zone, minimum traffic closure for road repair work.
- It is suitable to use in reinforced concrete.

## Air Entraining Agent

### CWC® Airopus Series

- It has the ability to reduce the density of concrete or mortar to be able to produce light weight element.
- It is useful to use in concrete with low fines.
- It helps to pump low fines concrete mix.

## Alkali Free shotcrete Accelerator

### CWC® Airo JET 100 / 150 series

- It helps to restrict fall of loose stones in tunnels by offering quick setting of concrete in tunneling.

## Pump Primer for concrete Pumping

### CWC® PumpEase 100

- It has the ability to replace cement slurry during concrete pumping.
- It helps to pump concrete either vertically or horizontally by reducing friction inside pipe and pump pressure.

## Compation Aid for Dry Cast Industry

### CWC® Compac Aid 3300 series

- It has the ability to compact the dry elements with good finish.
- It also offers quick hardening so that the elemnts can be demoulded quickly without any deformation.

## Corrosion Inhibiting admixture

### CWC® Corrobit BP

- It is useful to protect corrosion of reinforcement in aggressive corrosive environment.
- It helps to increase the durability of concrete by protecting corrosion.

## Concrete Curing compound

### CWC® Kure AB , CWC® Kure WB, CWC® Kure RB

- It restrict the evaporation loss from concrete surface.
- It Prevents cracking on concrete surface at early edge before final setting of concrete.
- It helps to preserve water for concrete curing .

## Formwork Release Agent

### CWC® Release DL100 / DL 200 series

- It is compatible will all kinds of formwork.
- No oil starin on concrete surface as well as no dust on concrete elements by using DL100.
- It enhances the life of formwork .

# CEMENT GRINDING AIDS

## Grinding Aids

### CWC® Cem Grind - 110

- It Increase process productivity .
- It reduces production cost.
- It improves quality of cement ( Blaine, PSD, Packing density )

## Activators

### CWC® Cem ACTIVATORS — 210 E/EL

- Increase cement strength (early and final)
- Reduction in Clinker factor & process cost reduction
- Reduction in Carbon dioxide emission.

## Air Entraining agent

### CWC® Cem AE Agents 410

- It Entrains and optimizes air & water reduction in mortars.
- Improves setting times, later strength & resist freeze thraw
- Reduction in Carbon dioxide emission.

## Set Time Extender

### CWC® Cem STR 510

- It increases the initial set time of cement.
- It helps to provide more time to users in respective application.

## NC Reduction

### CWC® Cem WRA 610

- It helps to reduce Normal Consistency of cement by lowering the water demand.
- It helps to increase strength of cement

# CWC WATERPROOFING, REPAIR AND RETROFITTING SYSTEMS CONCRETE REPAIR MORTAR

## Repair Mortar

### CWC®Smartcem MC 40 / CWC®Smartcem MC 60

- Single Component General Purpose Pre-mixed Flowable Micro Concrete
- It is a cementitious repair compound which is used to reinstate damaged and deteriorated concrete for structural repairs and strengthening.

### CWC®Smartcem PMC 40 / CWC®Smartcem PMC 60

- Polymer Modified Fiber Reinforced Non-Structural Concrete Repair Mortar
- It can be applied in thickness from 10 mm to 40 mm in vertical and 25 mm in overhead situation.
- It is a general purpose cementitious repair compound which is used to reinstate damaged and deteriorated concrete.

## Waterproofing Solution

### CWC®Smartcrete

- Acrylic Polymer Based Waterproof Protective Coating and Repairing Compound
- It is ideal for use in new areas, as well as in renovation work for surfacing, protecting, waterproofing, bonding old concrete to new concrete, gunning, sprayed mortar, repairs to concrete, brick work, masonry, and also as filling material for joints, grooves, etc.
- It is recommended for waterproofing of basements, toilets, roof gardens, terraces, swimming pools and water tanks and general concrete repairs.

### CWC®Smart Lastic / CWC®Smart Lastic 200

- Two Part Acrylic Polymer Based Elastomeric Waterproof Coating
- It is used as a waterproofing treatment for roof, basements rafts against rising dampness, retaining structures, water bodies, reservoirs, balconies, bathrooms, sunken areas, fountains, dome structures, decks and terraces.

### CWC®Smart Seal

- Crystalline Cementitious Waterproofing System
- It is used to waterproof underground concrete structures affected by water infiltration such as internal or external foundations, basements, lift shafts, underground garages and store rooms.

### CWC®Smarthane

- Liquid Applied Polyurethane Based Elastomeric Protective / Waterproofing Coating crystalline Cementitious Waterproofing System

### CWC®Smarthane AR

- Liquid Applied Polyurethane Based Elastomeric Anti-Root Protective / Waterproofing Coating

### CWC®Smarthane P

- Acrylic Based Primer for Elastomeric Coating

### CWC®Smart Acrylic 100

- Acrylic Polymer Based Elastomeric Waterproof Protective Heavy-Duty Coating
- Waterproofing of old as well as new flat / slope concrete roof/ terrace/ podium



# CWC WATERPROOFING, REPAIR AND RETROFITTING SYSTEMS CONCRETE REPAIR MORTAR

## **CWC@Smartguard**

- Acrylic Polymer Based Elastomeric Heavy Duty Anti-Carbonation Coating
- Used as anti-carbonation protective coating for bridge deck, under pass, building walls, etc. in all environments especially coastal areas. Also used as Waterproofing / protective coating of asbestos/ cement sheet roof and concrete/ plastered walls.

## **CWC@Smartguard P**

- Silane-Siloxane modified Penetrating Primer for Concrete and Masonry Structures
- It is used as an high performance primer for water based anti-carbonation and waterproof polymer coating for bridge deck, under pass, building walls, roofs, etc
- It can be used as sealer coat for industrial floors, interior/exterior walls

## **CWC@Smart Acrylic Primer**

- Water Based Penetrating Primer
- It is used as an high performance primer for water based anti-carbonation and waterproof polymer coating for bridge deck, under pass, building walls, roofs, etc
- It can be used as sealer coat for industrial floors, interior/exterior walls

## **Integral Waterproofing Compound**

### **CWC@Smart WP 200**

- Normal Setting Integral Waterproofing Compound For Cement Mortar & Concrete in Liquid Form
- In rendering / plastering work on all brick walls in Residential and Industrial Structures.
- In silos, basement structures and for damp-proof course in residential buildings.
- As an integral damp proofing /waterproofing compound in concrete for roof, slab etc.

### **CWC@Smart Crystal**

- ·Foundations ·Sewage treatment plants ·Tunnels and subway systems ·Underground structures ·Dams ·Pre-cast structures · Swimming pools and reservoirs ·Plastering of exterior walls ·Bridge decks, columns beams, etc. ·Roof and podium slabs and any other areas where high hydrostatic pressure is present.

## **Industrial Flooring**

### **CWC@Smart Floor NMF**

- By the use of **CWC@SMART FLOOR NMF**, the top surfaces of flooring and paving can be made wear resistant and dustproof.
- It is specially recommended in heavy engineering factories or as workshop floor toppings, hangers, car parks, in warehouses and gangways where frequently trolleys with metal wheels or forklifts carrying heavy load.

## **Protective And Decorative Coating**

### **CWC@Smart BituPrime**

- It is conventionally used as a primer on steel or concrete substrates, to establish bond between the mother surface and subsequent overcoats / membranes.

- It can also be used as protective coating of concrete structures and protection of galvanized iron in corrosive environment.

## **CWC@Smarthane PUR**

- Spray Applied Fast setting Polyurea Based Elastomeric Protective / Waterproofing Coating
- High performance waterproofing of bridge deck, basement, waste water tank lining, roof, terrace, podium, truck bed lining, tunnel lining, swimming pool, Green roof, etc.
- It can be applied on concrete, steel, aluminium, GRP Plastics, wood, SPF, etc.

## **CWC@Smart Epocrete 41**

- Epoxy Based Solvent Free Food Grade Coating
- It is recommended as a protective coating for the inside surfaces of tanks, sumps and walls.
- It is use as a pore free surface sealer resistant to the growth of bacteria.s.

## **CWC@Smart Transil**

- Silane/Siloxane Based water Repellent Compound for Masonry and Concrete
- It can be applied on exposed brick work, masonry surfaces, concrete, stone claddings, cement plaster, joints, pre-cast units
- It can be applied over plaster, plaster of Paris, brick walls, to prevent moisture infiltration, dampness of walls plaster cracking and blistering of paint.

## **CWC@Smart Marine**

- Acrylic Polymer Based Coating for Corrosion Protection of Steel
- It is use for Corrosion inhibitor/ passivator coating for concrete reinforcement steel, steel structures in sea or fresh water, saline environment.
- Bridge decks, ship decks, sheet piling walls, Structural steel members, interior and exterior surfaces of water tanks, above ground and underground tanks and pipes.

## **CWC@Smartcote 560**

- Coat Tar Based Chemical Resistant Epoxy Protective Coating
- It is used for marine piling, sheet piling, hydraulic pipes, pens-stocks, sewerage plant and industrial waste processing equipment, below ground retaining walls, building foundations.

## **Tile Adhesive And Bonding Additive**

### **CWC@Smart Grifix**

- Polymer Modified Cement Based General Purpose Tile Adhesive
- It is used for Bonding Ceramic, Mosaic, Marble and Granite Tiles to concrete surfaces floors and walls.

### **CWC@Smart Grifix Flex**

- Water Resistant Cementitious Polymer Modified Multipurpose Tile Adhesive
- It is used for bonding Vetrified tiles, Ceramic, Glass Mosaic, Marble and Granite Tiles to concrete surfaces floors and walls.
- It Can be used in shower recesses and swimming pools where continuous or intermittent immersion in water occurs.

# CWC WATERPROOFING, REPAIR AND RETROFITTING SYSTEMS CONCRETE REPAIR MORTAR

## **CWC@Smart Grifix Super**

- Heavy Duty Tile Adhesive for All Type of Tiles
- It is used for bonding Vetrified tiles, Ceramic, Glass Mosaic, Marble and Granite Tiles to concrete surfaces floors and walls.
- It Can be used in shower recesses and swimming pools where continuous or intermittent immersion in water occurs.
- It can also be used for fixing Aerated Autoclave Lightweight Concrete Blocks from Fly Ash (AAC) and insulating and acoustic boards based on expanded polystyrene plastics.

## **CWC@Smartflex EPA**

- Solvent Free Thixotropic Epoxy Adhesive
- Used as an epoxy adhesive for **CWC@SMART BAND** system.
- A highly effective adhesive for most building material including steel and concrete surface in an aggressive environment.

## **CWC@Smart Latex**

- SBR Latex Based All Purpose Waterproofing and Bonding Compound
- In rendering / plastering work on all brick walls in Residential and Industrial Structures.
- For repair / maintenance work of existing damp wall, saltpetre action in brick work.
- As an integral damp proofing /waterproofing compound in concrete for roof, slab, in marine structures and sea-facing building.

## **Grouts and anchors - Cementitious**

### **CWC@Smartcem VI**

- Non-Shrink, High Strength, Free Flow Cementitious Grout
- To grout bearings, machine foundations, columns joint in precast construction etc.
- To grout base plate of turbine, compressor, boilers, pumps, and heavy machinery.

### **CWC@Smartcem GP**

- Non-Shrink, General Purpose, Free Flow Cementitious Grout
- To grout bearings, machine foundations, columns joint in precast construction etc.
- To grout anchors in concrete

### **CWC@Smartcem M**

- Chloride Free Cementitious Microfine Injectable Non-Shrink Grout
- Grouting in concrete structures with medium to fine cracks, crevices, honey-combed concrete etc.
- Grouting anchor bolts of machine foundation and columns.

### **CWC@Smartcem C**

- Polymer Modified Non-Shrink Admixture For Injection Cement Grouting
- It is used as an admixture for Injection Grouting to effectively waterproof and stop leaks in underground structures, basements, tunnels, lift wells, retaining walls, dams, water reservoirs, pressure ducts and other water retaining structures.
- It can also be used as an additive to produce flowable Expansion (non shrink) concrete (with smaller sized graded aggregates are preferable) / mortar.

## **Sealants**

### **CWC@Smart Sealant PS**

- Polysulfide Based Elastomeric Joint Sealant-Road Grade
- It is used in concrete Roads and Highways, Rigid Pavements in Airports, Potable water retaining structure, Bridges

### **CWC@Smart Sealant PU**

- Singal Component Polyurethane Sealant
- It is used in metal frame circumference sealing, Sealing waterproof, Caulking agent, Repairing of cracks, Joint sealing of roads and factory floors.

### **CWC@Smart Sealant SIL**

- It is a universal gasket maker and general purpose adhesive and sealant for industrial and construction applications.
- It has good adhesion to substrates aluminium, mild steel, glass, ceramics, corks and many plastics.

### **CWC@Smart PS Primer**

- Single Component Moisture Cured Primer
- Primer for Polysulphide based Sealant.
- Protection of sub-structure against soil salts

### **CWC@Smarthane PU**

- Single Component Moisture Cured PU Primer
- Priming for Polyurethane based Elastomeric membrane as Elastothane.

## **Repair and Rehabilitation**

### **CWC@Smart Epocrete 41 LV**

- Low Viscosity Injectable Epoxy Grouting Compound
- As an injection resin with good adhesion to dry concrete, mortar, stone, steel, and wood.
- To fill and seal voids and cracks in structures such as bridges, industrial and residential buildings, e.g., columns, beams, foundations, walls, floors and water retaining structures.

### **CWC@Smart Epocrete 41 ULV**

- Ultra Low Viscosity Solvent Free High Strength Injectable Epoxy Grouting Compound
- As an injection resin with good adhesion to dry concrete, mortar, stone, steel, and wood.
- To fill and seal voids and cracks in structures such as bridges, industrial and residential buildings, e.g., columns, beams, foundations, walls, floors and water retaining structures.

### **CWC@Smart Epocrete 2115**

- High Strength Epoxy Mortar
- It is used as bedding or under filling mortar, anchoring of bolts, rebar, dowel bar, pocket grouting or to repair horizontal concrete surfaces such as Industrial Floors, Kerb stones, Joint arises in the Highways, Bridge Decks and Concrete Runways.

### **CWC@Smart Polygrout**

- Single Component Aqua-reactive PU Based Expanding Grouting Compound
- It is normally considered to be the last resort, when all conventional grouting methods to stop leakages have failed.
- To stop water leakage into underground structures (basements, tanks, sumps, pits etc.).



# CWC WATERPROOFING, REPAIR AND RETROFITTING SYSTEMS CONCRETE REPAIR MORTAR

## **CWC@Smart Polygrout HP**

- Aqua reactive PU Based Expanding Grouting Compound
- It is normally considered to be the last resort, when all conventional grouting methods to stop leakages have failed.
- To stop water leakage into underground structures (basements, tanks, sumps, pits etc.).

## **CWC@Smart EP Bonding Agent**

- Solvent Free Epoxy Resin Based Thixotropic Bonding Agent
- It is mainly used to bond permanently freshly mixed concrete or mortar, glazed bricks, tiles, steel or other structural material to old sound concrete

## **Expansion and Construction joint systems**

### **CWC@Reinjecto Hose**

- Particularly suited to quick repair situations like maintenance work.

### **CWC@Smart Swell**

- It is used for construction and cold joints in concrete, pipe penetrations, sewer systems, sub-terranean pre-fabricated concrete elements, temporary openings, etc.

### **CWC@Smart Band**

- High Performance Elastomeric Joint Sealing Tape
- It is used for waterproofing of internal old and new joints of water tanks, reservoirs, swimming pools, etc.
- It is used for repairing and sealing of joints where structural movement is very high.

## **Sheet Membranes**

### **CWC@Smart Bitushield**

- APP Modified Bituminous Membrane for Waterproofing
- It is used on low slope concrete roofs, balconies, multi-storied car parks, tunnels, for lining sewerage canals, sub grade structures and any concrete or cementitious flat surface that needs waterproofing.

### **CWC@Smart Bitushield SBS**

- SBS Modified Self Adhesive Bituminous Membrane
- It is used for waterproofing the underside or topside of slabs –on- grade
- It is used for waterproofing of foundation walls below as well as above

### **CWC@Smartshield PVC**

- It is used for tunnel and basement waterproofing
- It is used for waterproofing of below grade concrete structure

### **CWC@Smartshield HDPE**

- Pressure Sensitive HDPE Waterproofing Membrane
- It is used for waterproofing of below grade concrete structure
- It is used for protection of concrete foundation against water soluble aggressive chemicals.

### **CWC@Smartshield EPDM**

- EPDM Based Waterproofing Roof and Pond Lining Membrane
- It is used for large flat roofs of concrete and metal sheets
- It is used for basements and podium waterproofing





# PRODUCT SELECTION CARD / SEGMENT

Concrete Works Construction Chemicals Pvt. Ltd. : CONCRETE BU : WEST



Concrete Works  
Construction Chemicals  
Private Limited

	READY MIX CONCRETE	METRO	NUCLEAR	THERMAL / REFINERY	WIND MILL	AIRPORT	SEA PORT	HIGH RISE BUILDING	ROADS & BRIDGES
<b>ADMIXTURE UPTO M45</b>									
CWC@ROBOPLAST 1001	<input checked="" type="checkbox"/>								<input checked="" type="checkbox"/>
CWC@ROBOPLAST 1002	<input checked="" type="checkbox"/>				<input checked="" type="checkbox"/>				
CWC@ROBOPLAST 1003	<input checked="" type="checkbox"/>								
CWC@ROBOPLAST 1004	<input checked="" type="checkbox"/>								<input checked="" type="checkbox"/>
CWC@ROBOPLAST 1009	<input checked="" type="checkbox"/>				<input checked="" type="checkbox"/>				
CWC@ROBOPLAST 1013	<input checked="" type="checkbox"/>								<input checked="" type="checkbox"/>
CWC@ROBOPLAST 1014	<input checked="" type="checkbox"/>								<input checked="" type="checkbox"/>
CWC@ROBOPLAST 1019	<input checked="" type="checkbox"/>								
CWC@ROBOTECH 3001	<input checked="" type="checkbox"/>		<input checked="" type="checkbox"/>		<input checked="" type="checkbox"/>	<input checked="" type="checkbox"/>			
CWC@ROBOTECH 3002	<input checked="" type="checkbox"/>	<input checked="" type="checkbox"/>							
CWC@ROBOTECH 3003	<input checked="" type="checkbox"/>			<input checked="" type="checkbox"/>					
CWC@ROBOTECH 3006	<input checked="" type="checkbox"/>		<input checked="" type="checkbox"/>		<input checked="" type="checkbox"/>	<input checked="" type="checkbox"/>			
CWC@ROBOTECH 3008	<input checked="" type="checkbox"/>				<input checked="" type="checkbox"/>		<input checked="" type="checkbox"/>		
CWC@ROBOTECH 3010	<input checked="" type="checkbox"/>					<input checked="" type="checkbox"/>			
CWC@ROBOTECH 3012	<input checked="" type="checkbox"/>		<input checked="" type="checkbox"/>		<input checked="" type="checkbox"/>				<input checked="" type="checkbox"/>
CWC@ROBOTECH 3015	<input checked="" type="checkbox"/>							<input checked="" type="checkbox"/>	
CWC@ROBOTECH 5001	<input checked="" type="checkbox"/>	<input checked="" type="checkbox"/>	<input checked="" type="checkbox"/>	<input checked="" type="checkbox"/>	<input checked="" type="checkbox"/>	<input checked="" type="checkbox"/>			<input checked="" type="checkbox"/>
CWC@ROBOTECH 5040	<input checked="" type="checkbox"/>	<input checked="" type="checkbox"/>							
CWC@ROBOTECH 5002	<input checked="" type="checkbox"/>			<input checked="" type="checkbox"/>	<input checked="" type="checkbox"/>	<input checked="" type="checkbox"/>			<input checked="" type="checkbox"/>
CWC@ROBOTECH 5037	<input checked="" type="checkbox"/>		<input checked="" type="checkbox"/>						<input checked="" type="checkbox"/>
CWC@ROBOTECH 5053	<input checked="" type="checkbox"/>		<input checked="" type="checkbox"/>		<input checked="" type="checkbox"/>		<input checked="" type="checkbox"/>		
CWC@ROBOTECH 5003	<input checked="" type="checkbox"/>					<input checked="" type="checkbox"/>			<input checked="" type="checkbox"/>
CWC@ROBOTECH 5036	<input checked="" type="checkbox"/>		<input checked="" type="checkbox"/>						<input checked="" type="checkbox"/>
CWC@ROBOTECH 5014	<input checked="" type="checkbox"/>			<input checked="" type="checkbox"/>	<input checked="" type="checkbox"/>			<input checked="" type="checkbox"/>	

# PRODUCT SELECTION CARD / SEGMENT

Concrete Works Construction Chemicals Pvt. Ltd. : CONCRETE BU : WEST



Concrete Works  
Construction Chemicals  
Private Limited

	READY MIX CONCRETE	METRO	NUCLEAR	THERMAL / REFINERY	WIND MILL	AIRPORT	SEA PORT	HIGH RISE BUILDING	ROADS & BRIDGES
<b>ADMIXTURE M50 &amp; ABOVE</b>									
CWC@ROBOHYBRID 7001	<input checked="" type="checkbox"/>			<input checked="" type="checkbox"/>		<input checked="" type="checkbox"/>		<input checked="" type="checkbox"/>	
CWC@ROBOHYBRID 7003	<input checked="" type="checkbox"/>	<input checked="" type="checkbox"/>						<input checked="" type="checkbox"/>	<input checked="" type="checkbox"/>
CWC@ROBOHYBRID 7002	<input checked="" type="checkbox"/>			<input checked="" type="checkbox"/>			<input checked="" type="checkbox"/>	<input checked="" type="checkbox"/>	
CWC@ROBOHYBRID 7014	<input checked="" type="checkbox"/>		<input checked="" type="checkbox"/>			<input checked="" type="checkbox"/>		<input checked="" type="checkbox"/>	
CWC@ROBOHYBRID 7040	<input checked="" type="checkbox"/>			<input checked="" type="checkbox"/>	<input checked="" type="checkbox"/>		<input checked="" type="checkbox"/>		
CWC@ROBOHYBRID 7004	<input checked="" type="checkbox"/>	<input checked="" type="checkbox"/>				<input checked="" type="checkbox"/>			<input checked="" type="checkbox"/>
CWC@ROBOHYBRID 7038	<input checked="" type="checkbox"/>			<input checked="" type="checkbox"/>					<input checked="" type="checkbox"/>
<b>SCC/ HIGH RISE PUMPING/ HPC</b>									
CWC@ROBOHYBRID PLUS 701	<input checked="" type="checkbox"/>		<input checked="" type="checkbox"/>					<input checked="" type="checkbox"/>	
CWC@ROBOHYBRID PLUS 702	<input checked="" type="checkbox"/>	<input checked="" type="checkbox"/>		<input checked="" type="checkbox"/>				<input checked="" type="checkbox"/>	
CWC@ROBOHYBRID PLUS 703		<input checked="" type="checkbox"/>	<input checked="" type="checkbox"/>				<input checked="" type="checkbox"/>	<input checked="" type="checkbox"/>	
<b>ADMIXTURE EARLY STRENGTH</b>									
CWC@ROBOCAST 9001			<input checked="" type="checkbox"/>			<input checked="" type="checkbox"/>			<input checked="" type="checkbox"/>
CWC@ROBOCAST 9005	<input checked="" type="checkbox"/>	<input checked="" type="checkbox"/>							
CWC@ROBOCAST 9002		<input checked="" type="checkbox"/>	<input checked="" type="checkbox"/>	<input checked="" type="checkbox"/>		<input checked="" type="checkbox"/>	<input checked="" type="checkbox"/>		
CWC@ROBOCAST 9003		<input checked="" type="checkbox"/>							<input checked="" type="checkbox"/>
CWC@ROBOCAST 9006	<input checked="" type="checkbox"/>			<input checked="" type="checkbox"/>			<input checked="" type="checkbox"/>		
<b>EXTENDED WORKABILITY RETENTION</b>									
CWC@ROBOHYBRID 101	<input checked="" type="checkbox"/>	<input checked="" type="checkbox"/>					<input checked="" type="checkbox"/>		<input checked="" type="checkbox"/>
CWC@ROBOHYBRID 104							<input checked="" type="checkbox"/>		

# PRODUCT SELECTION CARD / SEGMENT

Concrete Works Construction Chemicals Pvt. Ltd. : CONCRETE BU : WEST



Concrete Works  
Construction Chemicals  
Private Limited

	READY MIX CONCRETE	METRO	NUCLEAR	THERMAL / REFINERY	WIND MILL	AIRPORT	SEA PORT	HIGH RISE BUILDING	ROADS & BRIDGES
<b>CURING COMPOUND</b>									
CWC@KURE WB309	<input checked="" type="checkbox"/>		<input checked="" type="checkbox"/>	<input checked="" type="checkbox"/>		<input checked="" type="checkbox"/>	<input checked="" type="checkbox"/>		<input checked="" type="checkbox"/>
CWC@KURE RB309				<input checked="" type="checkbox"/>					<input checked="" type="checkbox"/>
CWC@KURE AB315		<input checked="" type="checkbox"/>	<input checked="" type="checkbox"/>		<input checked="" type="checkbox"/>			<input checked="" type="checkbox"/>	
<b>DE-MOULDING AGENT</b>									
CWC@RELEASE DL100	<input checked="" type="checkbox"/>	<input checked="" type="checkbox"/>	<input checked="" type="checkbox"/>	<input checked="" type="checkbox"/>	<input checked="" type="checkbox"/>	<input checked="" type="checkbox"/>	<input checked="" type="checkbox"/>	<input checked="" type="checkbox"/>	<input checked="" type="checkbox"/>
CWC@RELEASE DL250									<input checked="" type="checkbox"/>
<b>BIPOLAR CORROSION INHIBITOR</b>									
CWC@CORROBIT BP		<input checked="" type="checkbox"/>				<input checked="" type="checkbox"/>	<input checked="" type="checkbox"/>	<input checked="" type="checkbox"/>	<input checked="" type="checkbox"/>
<b>DE-MOULDING AGENT</b>									
CWC@RELEASE DL100	<input checked="" type="checkbox"/>	<input checked="" type="checkbox"/>	<input checked="" type="checkbox"/>	<input checked="" type="checkbox"/>	<input checked="" type="checkbox"/>	<input checked="" type="checkbox"/>	<input checked="" type="checkbox"/>	<input checked="" type="checkbox"/>	<input checked="" type="checkbox"/>
CWC@RELEASE DL250									<input checked="" type="checkbox"/>
<b>BIPOLAR CORROSION INHIBITOR</b>									
CWC@CORROBIT BP		<input checked="" type="checkbox"/>				<input checked="" type="checkbox"/>	<input checked="" type="checkbox"/>	<input checked="" type="checkbox"/>	<input checked="" type="checkbox"/>





# PRODUCT SELECTION CARD / SEGMENT

Concrete Works Construction Chemicals Pvt. Ltd. : CONCRETE BU : South



Concrete Works  
Construction Chemicals  
Private Limited

	READY MIX CONCRETE	METRO	NUCLEAR	THERMAL / REFINERY	WIND MILL	AIRPORT	SEA PORT	HIGH RISE BUILDING	ROADS & BRIDGES
<b>ADMIXTURE UPTO M45</b>									
CWC@ROBOTECH 5505	<input checked="" type="checkbox"/>								
CWC@ROBOTECH 5600		<input checked="" type="checkbox"/>							
CWC@ROBOTECH 5575				<input checked="" type="checkbox"/>			<input checked="" type="checkbox"/>		
CWC@ROBOTECH 5550									<input checked="" type="checkbox"/>
<b>ADMIXTURE M50 &amp; ABOVE</b>									
CWC@ROBOHYBRID 7505	<input checked="" type="checkbox"/>			<input checked="" type="checkbox"/>					
CWC@ROBOHYBRID 7300		<input checked="" type="checkbox"/>							
CWC@ROBOHYBRID R300							<input checked="" type="checkbox"/>		
CWC@ROBOHYBRID J100									<input checked="" type="checkbox"/>
<b>ADMIXTURE EARLY STRENGTH</b>									
CWC@ROBOCAST 550HE			<input checked="" type="checkbox"/>						
CWC@ROBOCAST 9300		<input checked="" type="checkbox"/>							
CWC@ROBOCAST 121 HE				<input checked="" type="checkbox"/>					
CWC@ROBOCAST 9200									<input checked="" type="checkbox"/>
CWC@ROBOCAST 110HE								<input checked="" type="checkbox"/>	
<b>EXTENDED WORKABILITY RETENTION</b>									
CWC@ROBOHYBRID 104	<input checked="" type="checkbox"/>						<input checked="" type="checkbox"/>		
<b>CURING COMPOUND</b>									
CWC@KURE WB309	<input checked="" type="checkbox"/>		<input checked="" type="checkbox"/>	<input checked="" type="checkbox"/>		<input checked="" type="checkbox"/>	<input checked="" type="checkbox"/>		<input checked="" type="checkbox"/>
CWC@KURE RB				<input checked="" type="checkbox"/>					<input checked="" type="checkbox"/>
CWC@KURE AB350		<input checked="" type="checkbox"/>	<input checked="" type="checkbox"/>		<input checked="" type="checkbox"/>			<input checked="" type="checkbox"/>	

# INDICATIVE RATE OF ADDITION / PACKING / SHELF LIFE

PRODUCT	INDICATIVE OPERATIONAL DOSAGE RANGE (%)	PACKING	SHELF LIFE
CWC@ROBOPLAST 1001	0.7% - 1.3%	230 Kg HDPE Barrel / 10 MT Tanker	12MONTHS
CWC@ROBOPLAST 1002	0.7% - 1.3%	230 Kg HDPE Barrel / 10 MT Tanker	12MONTHS
CWC@ROBOPLAST 1003	0.7% - 1.3%	230 Kg HDPE Barrel / 10 MT Tanker	12MONTHS
CWC@ROBOPLAST 1004	0.7% - 1.3%	230 Kg HDPE Barrel / 10 MT Tanker	12MONTHS
CWC@ROBOPLAST 1005	0.7% - 1.3%	230 Kg HDPE Barrel / 10 MT Tanker	12MONTHS
CWC@ROBOPLAST 1006	0.7% - 1.3%	230 Kg HDPE Barrel / 10 MT Tanker	12MONTHS
CWC@ROBOPLAST 1007	0.7% - 1.3%	230 Kg HDPE Barrel / 10 MT Tanker	12MONTHS
CWC@ROBOPLAST 1008	0.7% - 1.3%	230 Kg HDPE Barrel / 10 MT Tanker	12MONTHS
CWC@ROBOTECH 3001	0.7% - 1.3%	230 Kg HDPE Barrel / 10 MT Tanker	12MONTHS
CWC@ROBOTECH 3002	0.7% - 1.3%	230 Kg HDPE Barrel / 10 MT Tanker	12MONTHS
CWC@ROBOTECH 3003	0.7% - 1.3%	230 Kg HDPE Barrel / 10 MT Tanker	12MONTHS
CWC@ROBOTECH 3006	0.7% - 1.3%	230 Kg HDPE Barrel / 10 MT Tanker	12MONTHS
CWC@ROBOTECH 3008	0.7% - 1.3%	230 Kg HDPE Barrel / 10 MT Tanker	12MONTHS
CWC@ROBOTECH 3010	0.7% - 1.3%	230 Kg HDPE Barrel / 10 MT Tanker	12MONTHS
CWC@ROBOTECH 3012	0.7% - 1.3%	230 Kg HDPE Barrel / 10 MT Tanker	12MONTHS
CWC@ROBOTECH 3015	0.7% - 1.3%	230 Kg HDPE Barrel / 10 MT Tanker	12MONTHS
CWC@ROBOTECH 5001	0.8% - 1.2%	230 Kg HDPE Barrel / 10 MT Tanker	12MONTHS
CWC@ROBOTECH 5002	0.8% - 1.2%	230 Kg HDPE Barrel / 10 MT Tanker	12MONTHS
CWC@ROBOTECH 5003	0.8% - 1.2%	230 Kg HDPE Barrel / 10 MT Tanker	12MONTHS
CWC@ROBOTECH 5014	0.8% - 1.2%	230 Kg HDPE Barrel / 10 MT Tanker	12MONTHS
CWC@ROBOTECH 5036	0.8% - 1.2%	230 Kg HDPE Barrel / 10 MT Tanker	12MONTHS
CWC@ROBOTECH 5037	0.8% - 1.2%	230 Kg HDPE Barrel / 10 MT Tanker	12MONTHS
CWC@ROBOTECH 5040	0.8% - 1.2%	230 Kg HDPE Barrel / 10 MT Tanker	12MONTHS
CWC@ROBOTECH 5053	0.8% - 1.2%	230 Kg HDPE Barrel / 10 MT Tanker	12MONTHS
CWC@ROBOHYBRID 7001	0.9% - 1.4%	230 Kg HDPE Barrel / 10 MT Tanker	12MONTHS
CWC@ROBOHYBRID 7002	0.9% - 1.4%	230 Kg HDPE Barrel / 10 MT Tanker	12MONTHS
CWC@ROBOHYBRID 7003	0.9% - 1.4%	230 Kg HDPE Barrel / 10 MT Tanker	12MONTHS
CWC@ROBOHYBRID 7004	0.9% - 1.4%	230 Kg HDPE Barrel / 10 MT Tanker	12MONTHS
CWC@ROBOHYBRID 7014	0.9% - 1.4%	230 Kg HDPE Barrel / 10 MT Tanker	12MONTHS
CWC@ROBOHYBRID 7038	0.9% - 1.4%	230 Kg HDPE Barrel / 10 MT Tanker	12MONTHS
CWC@ROBOHYBRID 7040	0.9% - 1.4%	230 Kg HDPE Barrel / 10 MT Tanker	12MONTHS

# INDICATIVE RATE OF ADDITION / PACKING / SHELF LIFE

PRODUCT	INDICATIVE OPERATIONAL DOSAGE RANGE (%)	PACKING	SHELF LIFE
CWC@ROBOHYBRID PLUS 701	0.9% - 1.6%	230 Kg HDPE Barrel / 10 MT Tanker	12MONTHS
CWC@ROBOHYBRID PLUS 702	0.9% - 1.6%	230 Kg HDPE Barrel / 10 MT Tanker	12MONTHS
CWC@ROBOHYBRID PLUS 703	0.9% - 1.6%	230 Kg HDPE Barrel / 10 MT Tanker	12MONTHS
CWC@ROBOCAST 9001	0.7% - 1.2%	230 Kg HDPE Barrel / 10 MT Tanker	12MONTHS
CWC@ROBOCAST 9002	0.7% - 1.2%	230 Kg HDPE Barrel / 10 MT Tanker	12MONTHS
CWC@ROBOCAST 9003	0.7% - 1.2%	230 Kg HDPE Barrel / 10 MT Tanker	12MONTHS
CWC@ROBOCAST 9005	0.7% - 1.2%	230 Kg HDPE Barrel / 10 MT Tanker	12MONTHS
CWC@ROBOCAST 9006	0.7% - 1.2%	230 Kg HDPE Barrel / 10 MT Tanker	12MONTHS
CWC@ROBOHYBRID 101	0.8% - 1.8%	230 Kg HDPE Barrel / 10 MT Tanker	12MONTHS
CWC@ROBOHYBRID 104	0.8% - 1.8%	230 Kg HDPE Barrel / 10 MT Tanker	12MONTHS
CWC@KURE WB309	Coverage - 3.5 and 5.0 sq.m / litre	20Litre/ 200Litre Barrel & bulk in 1000 lit	6MONTHS
CWC@KURE RB309	Coverage - 5.0 and 6.0 sq.m / litre	20Litre/ 200Litre Barrel & bulk in 1000 lit	6MONTHS
CWC@KURE AB315	CWC@KURE AB315	20Litre/ 200Litre Barrel & bulk in 1000 lit	6MONTHS
CWC@RELEASE DL100	Coverage - About 40 sq. mtr./litre	20Litre/ 200Litre Barrel	12MONTHS
CWC@CORROBIT BP	2-3 Kg per cubic meter of concrete	200kg Barrel	6MONTHS





# INDICATIVE RATE OF ADDITION / PACKING / SHELF LIFE

PRODUCT	INDICATIVE OPERATIONAL DOSAGE RANGE (%)	PACKING	SHELF LIFE
CWC@ROBOTECH 5505	0.7 - 0.9 %	230 Kg HDPE Barrel / 10 MT Tanker	12MONTHS
CWC@ROBOTECH 5550	0.6 - 0.8%	231 Kg HDPE Barrel / 10 MT Tanker	12MONTHS
CWC@ROBOTECH 5575	0.6 - 0.7%	232 Kg HDPE Barrel / 10 MT Tanker	12MONTHS
CWC@ROBOTECH 5600	0.7 - 0.8%	233 Kg HDPE Barrel / 10 MT Tanker	12MONTHS
CWC@ROBOHYBRID 7300	0.4 - 0.5 %	234 Kg HDPE Barrel / 10 MT Tanker	12MONTHS
CWC@ROBOHYBRID 7505	0.4 - 0.5 %	235 Kg HDPE Barrel / 10 MT Tanker	12MONTHS
CWC@ROBOHYBRID R300	0.3-0.45 %	236 Kg HDPE Barrel / 10 MT Tanker	12MONTHS
CWC@ROBOHYBRID J100	0.5-0.7%	237 Kg HDPE Barrel / 10 MT Tanker	12MONTHS
CWC@ROBOCAST 110HE	0.7-0.8%	238 Kg HDPE Barrel / 10 MT Tanker	12MONTHS
CWC@ROBOCAST 121 HE	0.8-0.9%	239 Kg HDPE Barrel / 10 MT Tanker	12MONTHS
CWC@ROBOCAST 550HE	0.5-0.6%	240 Kg HDPE Barrel / 10 MT Tanker	12MONTHS
CWC@ROBOCAST 9200	0.4-0.5%	241 Kg HDPE Barrel / 10 MT Tanker	12MONTHS
CWC@ROBOCAST 9300	0.5-0.6%	242 Kg HDPE Barrel / 10 MT Tanker	12MONTHS
CWC@CORROBIT BP	2-3 kg	200 Kg HDPE Barrel / 1 MT Tanker	12MONTHS
CWC@KURE WB309	Coverage - 3.5 and 5.0 sq.m / litre	20Litre/ 200Litre Barrel & bulk in 1000 lit	6MONTHS
CWC@KURE RB	Coverage - 5.0 and 6.0 sq.m / litre	20Litre/ 200Litre Barrel & bulk in 1000 lit	6MONTHS
CWC@KURE AB315	Coverage - 5.5 and 6.5 sq.m / litre	20Litre/ 200Litre Barrel & bulk in 1000 lit	6MONTHS
CWC@RELEASE DL100	Coverage - About 40 sq. mtr./litre	20Litre/ 200Litre Barrel	12MONTHS
CWC@RELEASE DL250	Coverage - About 40 sq. mtr./litre	20Litre/ 200Litre Barrel	12MONTHS







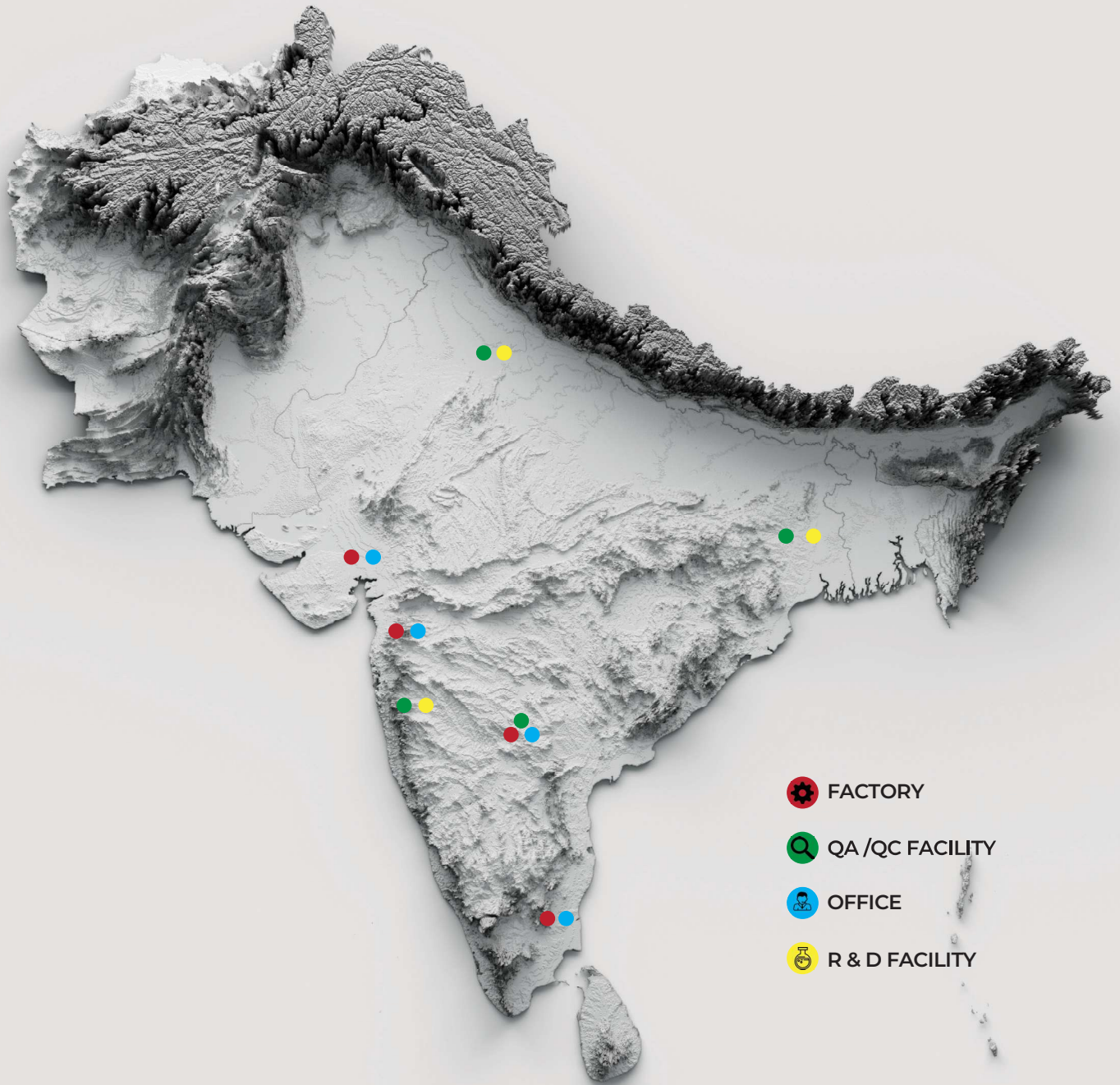
“

**Creating and Delivering  
Technology for the Industry**





Concrete Works  
Construction Chemicals  
Private Limited



**CONCRETE WORKS CONSTRUCTION CHEMICALS PVT LTD.**

OFFICE NO.70, MAHAVIR CENTRE SECTOR 17 , VASHI , NAVI MUMBAI, MAHARASHTRA, INDIA – 400703

Email Us: [info@cwchemicals.com](mailto:info@cwchemicals.com) | Web: [www.cwchemicals.com](http://www.cwchemicals.com)