



## CWC® CSR B-1000

### Surface retarder for horizontal exposed aggregate concrete surfaces

#### Description

**CSR B-1000** is a water based chemical retarder used to expose the aggregate in horizontal concrete surfaces. **CSR B-1000** delays the set of the mortar paste on the surface to a controlled depth. **CSR B-1000** does not kill the set of the main concrete. The retarded mortar paste may be removed by washing and brushing after the set of the concrete to expose the aggregate.

**CSR B-1000** is a surface retarder for application on horizontal surfaces of freshly placed concrete areas such as :

- Floor slabs
- Paths
- Driveways
- Patios
- Swimming Pools
- Concrete Construction Joints, etc.

#### Indicative characteristics

Form	: Blue colour Liquid
Specific Gravity	: 1.220 ± 0.02
Air entrainment	: ≤ 1.5 % over control mix.
pH	: Min. 6.0
Chloride Content	: Nil, as per BS - 5075 (Part-I)

\* The uniformity parameters like specific gravity, pH, chloride content etc. will vary for specific customer requirements and mix design. Please refer our MTC issued for specific product configuration for measuring our product parameters that will be constantly and consistently administered.

#### Standard Compliance

**CSR B-1000** complies with IS9103:1999, BS 5075 Part 3 and with ASTM C494 admixture depending on dosage used.

#### Advantages:

- Controlled retardation of concrete surface -produces consistent textured and attractive exposed aggregate surface
- Easy to use – simple spray application
- Economic – only 250ml per square meter
- Consistent exposed aggregate surface - improved bond of fresh concrete to exposed surfaces
- Controlled retardation of surface set – no residual retardation to interfere with subsequent toppings or concrete pours
- Water based – simple clean up

#### Domains of application

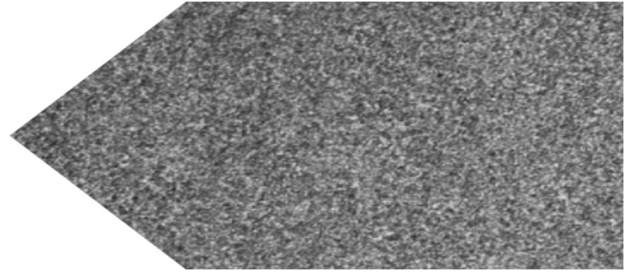
- Safe to use - easy to apply
- Works quickly and effectively
- Provides up to 5 -6 mm depth retardation
- Reduces cost of mechanically preparing surfaces for waterproofing, stucco or plaster application
- Etch depth can be adjusted as desired

#### DIRECTION OF USE

**Surface Preparation:** Forms to be coated should be clean and free of oil, dirt and form release agents. It is applied to freshly placed horizontal concrete surfaces immediately after final finishing operations. It should be applied by low pressure spray and the treated surfaces then covered to prevent rapid evaporation. The retarded mortar should be flushed off with water in 12 to 24 hours after application depending upon weather conditions.



Concrete Works  
Construction Chemicals  
Private Limited



**Mixing:** CONCRETE SURFACE RETARDER does not require pre-blending. These products should be used directly from the container.

#### Dosage

It should be applied at a consumption of 0.2-0.3 L/m<sup>2</sup> (this will provide approximately 5-6 mm depth of retardation). In windy or hot conditions, it is recommended to apply at a rate of 0.3 L/ m<sup>2</sup> and if unable to remove surface paste in the short term (6-8 hours) then two applications should be used.

\*\* Higher dosage can be used if agreed & allowed by clients/consultants

#### Effects of over dosage

A severe over-dosage of **CSR B-1000** can result in the following:

It only retards the surface setting of the concrete and does not “kill” the set. If the surface is not washed off within the retarding period, the concrete will set and reach ultimate strength. Thereafter the surface will be difficult to remove

#### Packaging

- 20 kg Bucket ,200 kg Barrel

**Shelf Life:** If stored in unopened containers at normal ambient temperatures, a shelf-life of approximately 12 months.

Freezing point: Approximately -2°C.

#### Precautions

Not to be stored at high temperatures for long periods. Should be protected from frost. It is Non-toxic and formulated from chemicals which present no fire or health hazards. Spillages should be washed down immediately with water.

#### Safety

Before use, refer to the Material Safety Data Sheet.

The MSDS is available on [www.cwcchemicals.com](http://www.cwcchemicals.com)

#### Additional information

The CWC range of associated products include high strength cementitious, epoxy grout, polyester resin-based mortar, Resin anchoring systems. Also available a range of products for use in construction; viz., admixtures, curing compounds, release agents, flooring systems and repair mortars.

Separate datasheets are available on these products.

#### Regional offices

##### MUMBAI:

Office No – 70, Mahavir center,  
Sector 17, Vashi – 400703,  
Navi Mumbai, Maharashtra, INDIA.

##### CHENNAI:

Plot No.3/86-E, Ground Floor  
AIEMA Road, Ambattur Industrial Estate  
Chennai – 600058 Tamil Nadu, India

[www.cwcchemicals.com](http://www.cwcchemicals.com)

[info@cwchemicals.com](mailto:info@cwchemicals.com)